

DATA SHEET



Three Phase Induction Motor - Squirrel Cage

Customer :					
Product line		: W21 Explosion Proof NEMA Premium Efficiency Three-Phase		Product code : 14284619	
				Catalog # : 01018XT3E215TC	
Frame	: L215TC	Cooling method	: IC411 - TEFC		
Insulation class	: F	Mounting	: F-1		
Duty cycle	: Cont.(S1)	Rotation ¹	: Both (CW and CCW)		
Ambient temperature	: -20°C to +40°C	Starting method	: Direct On Line		
Altitude	: 1000 m.a.s.l.	Approx. weight ²	: 229 lb		
Protection degree	: IP55	Moment of inertia (J)	: 1.34 sq.ft.lb		
Design	: B				
Output [HP]	10		10		
Poles	4		4		
Frequency [Hz]	50		60		
Rated voltage [V]	380		208-230/460		
Rated current [A]	15.3		28.0-25.3/12.7		
L. R. Amperes [A]	87.2		182-164/82.5		
LRC [A]	5.7x(Code G)		6.5x(Code H)		
No load current [A]	5.30		9.48-11.0/5.50		
Rated speed [RPM]	1450		1765		
Slip [%]	3.33		1.94		
Rated torque [ft.lb]	36.2		29.8		
Locked rotor torque [%]	165		210		
Breakdown torque [%]	220		270		
Service factor	1.00		1.15		
Temperature rise	80 K		80 K		
Locked rotor time	36s (cold) 20s (hot)		27s (cold) 15s (hot)		
Noise level ²	56.0 dB(A)		58.0 dB(A)		
Efficiency (%)	25%	0.000	0.000		
	50%	90.2	90.2		
	75%	89.5	91.0		
	100%	88.5	91.7		
Power Factor	25%	0.00	0.00		
	50%	0.70	0.62		
	75%	0.80	0.75		
	100%	0.84	0.81		
Bearing type	: Drive end 6308 2RS	Non drive end 6207 2RS	Foundation loads		
Sealing	: Oil Seal	Lip Seal	Max. traction : 338 lb		
Lubrication interval	: 0 h	0 h	Max. compression : 568 lb		
Lubricant amount	: 0 g	0 g			
Lubricant type	: Mobil Polyrex EM				
Notes					
This revision replaces and cancel the previous one, which must be eliminated. (1) Looking the motor from the shaft end. (2) Measured at 1m and with tolerance of +3dB(A). (3) Approximate weight subject to changes after manufacturing process. (4) At 100% of full load.			These are average values based on tests with sinusoidal power supply, subject to the tolerances stipulated in NEMA MG-1.		
Rev.	Changes Summary		Performed	Checked	Date
Performed by					
Checked by				Page	Revision
Date	20/09/2024			1 /	

DATA SHEET

Three Phase Induction Motor - Squirrel Cage



Customer : _____

Thermal protection

ID	Application	Type	Quantity	Sensing Temperature
1	Winding	Thermostat - 2 wires	1 x Phase	155 °C

Rev.	Changes Summary	Performed	Checked	Date
Performed by				
Checked by			Page	Revision
Date	20/09/2024		2 /	

TORQUE AND CURRENT VS SPEED CURVE



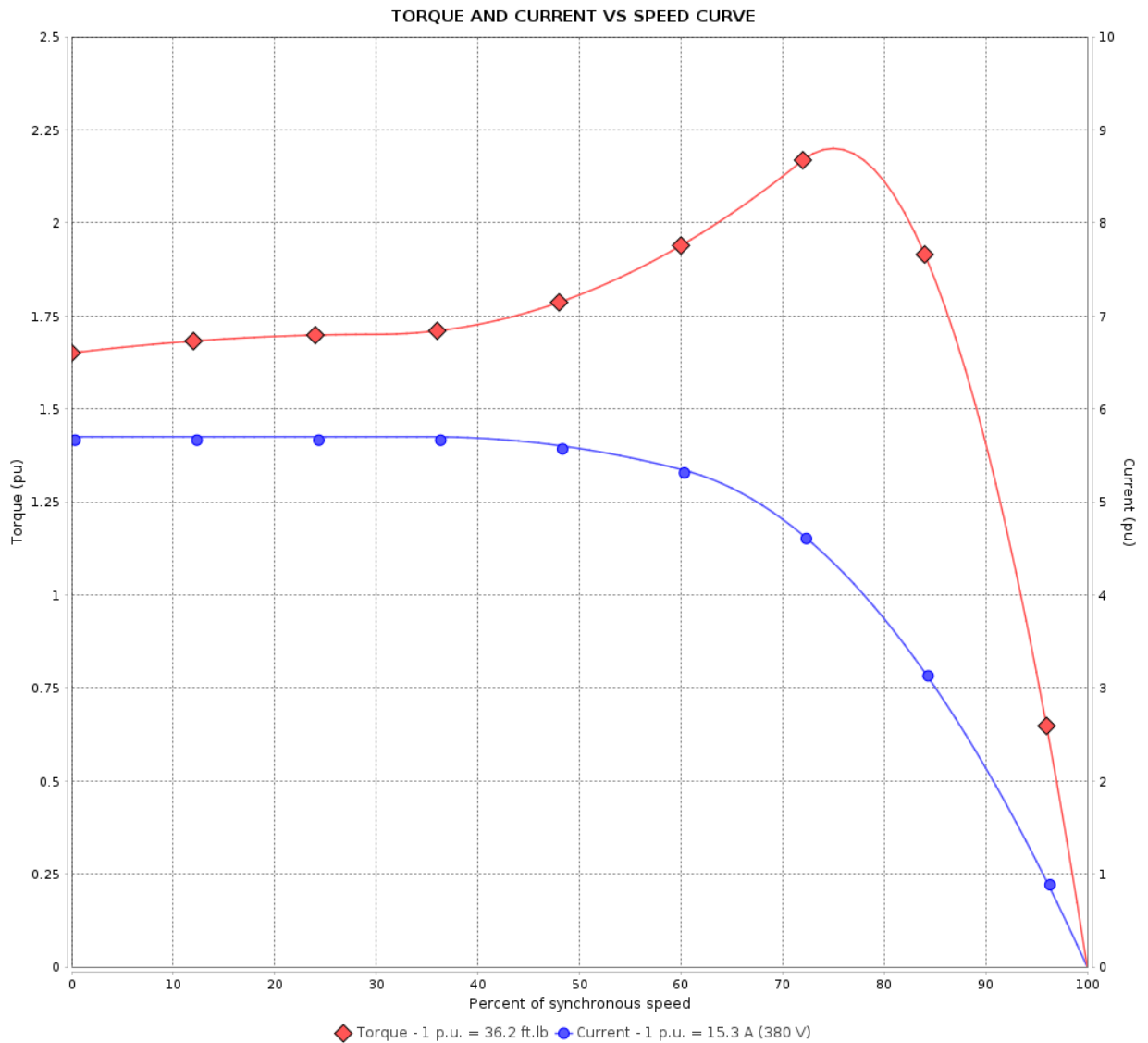
Three Phase Induction Motor - Squirrel Cage

Customer :

Product line : W21 Explosion Proof NEMA Premium Efficiency Three-Phase

Product code : 14284619

Catalog # : 01018XT3E215TC



Performance : 380 V 50 Hz 4P

Rated current	: 15.3 A	Moment of inertia (J)	: 1.34 sq.ft.lb
LRC	: 5.7	Duty cycle	: Cont.(S1)
Rated torque	: 36.2 ft.lb	Insulation class	: F
Locked rotor torque	: 165 %	Service factor	: 1.00
Breakdown torque	: 220 %	Temperature rise	: 80 K
Rated speed	: 1450 rpm	Design	: B

Locked rotor time : 36s (cold) 20s (hot)

Rev.	Changes Summary	Performed	Checked	Date
Performed by			Page 3 /	Revision
Checked by				
Date	20/09/2024			

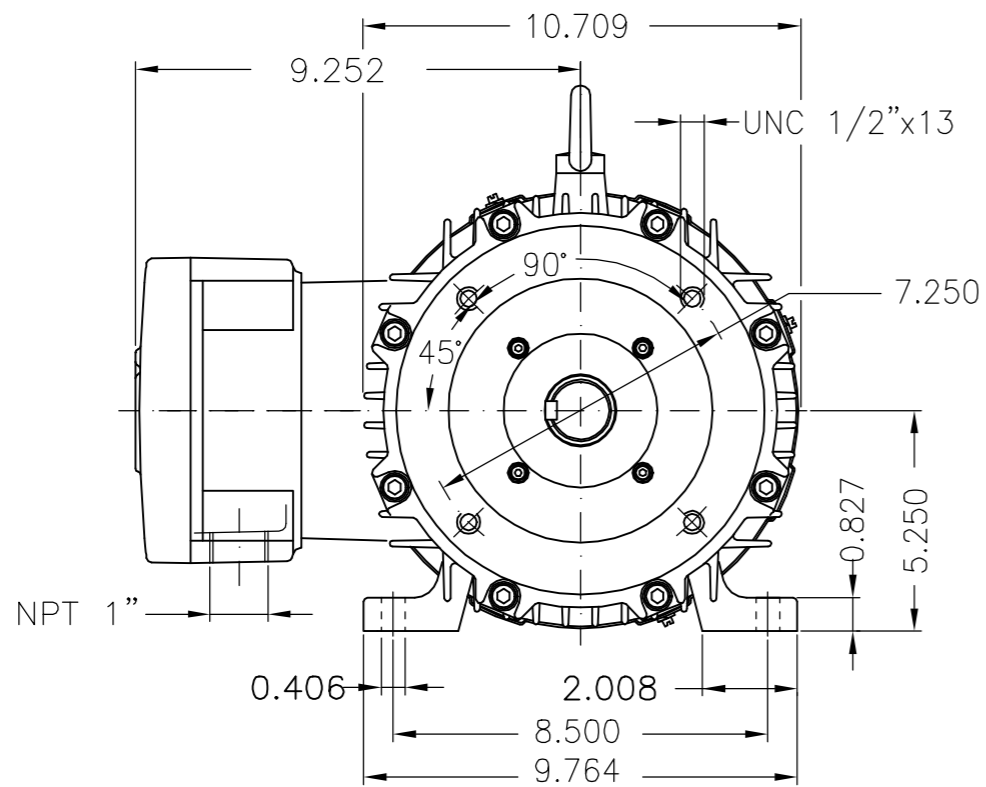
EIXO/SHAFT	
PADRÃO/STANDARD	X
OPCIONAL/OPTIONAL	
ESPECIAL/SPECIAL	

Dimensões em polegada
Dimensions in inches

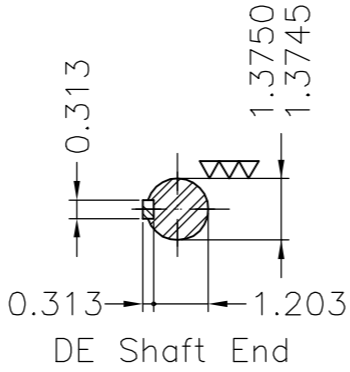
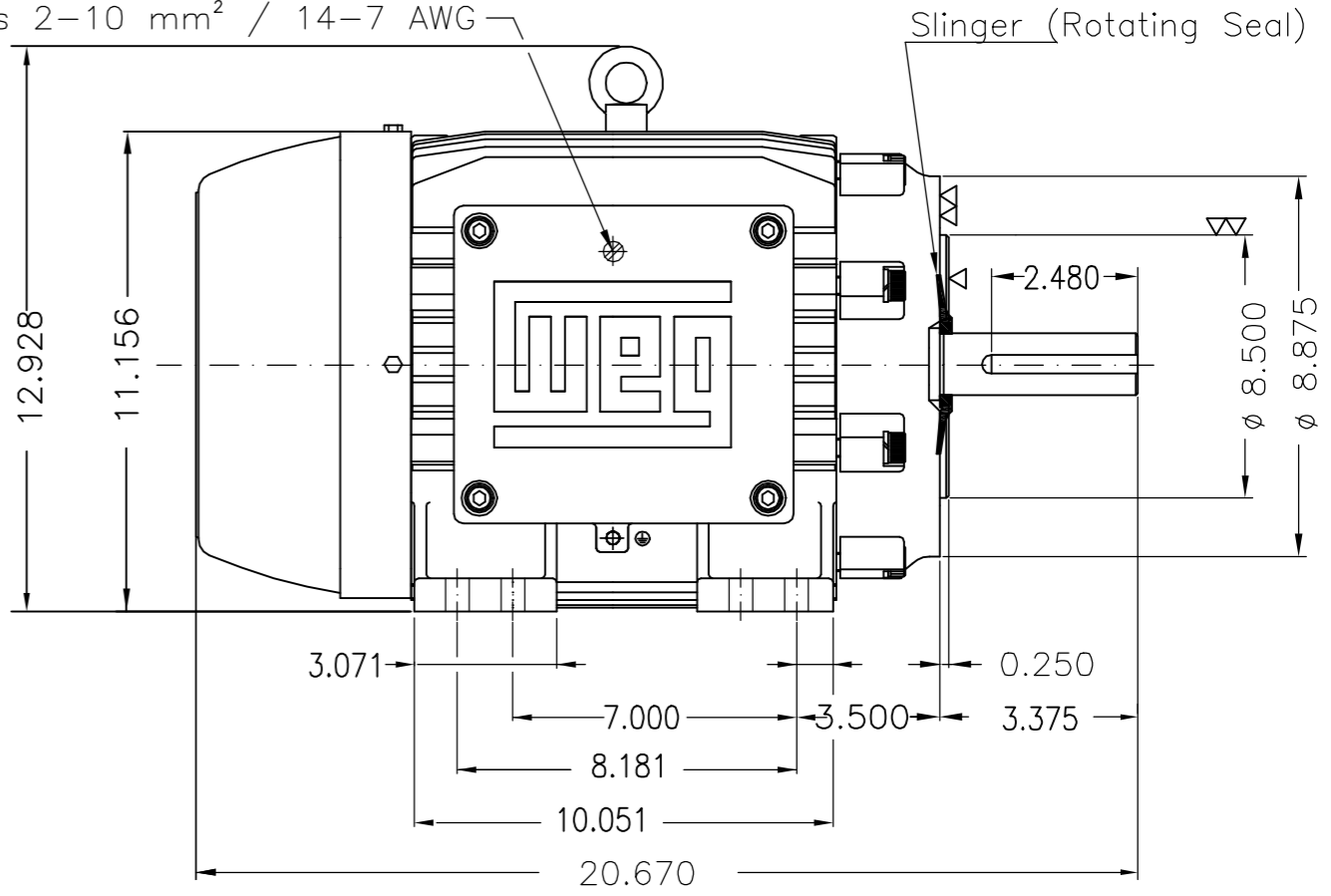
**CERTIFIED
WEG MOTORES**
Certified document.
Not subject to changes.

THIS IS AN UPDATED REVISION, THE
PREVIOUS ONE MUST BE DISREGARDED.

A
B
C
D
E



Grounding for leads 2-10 mm² / 14-7 AWG



Caixa de ligação W21 / W21 terminal box						
Cor RAL 5009 / Color RAL 5009						
Plano de pintura 202P / Painting plan 202P						
Forma construtiva NEMA F-1 / Mounting NEMA F-1						
Forma construtiva B34D / Mounting B34R(D)						
WEG ELECTRIC CORPORATION - WEC						
500001594952		ALTERADO CONF. CLAIM 415204042	RICLAV		20.05.2019	03
500001427824		REMOVED HIDDEN NOTE CODE 485	ERIC	MENSOR	MENSOR	13.03.2018 02
ECM ECM	LOC LOC	RESUMO MODIFICAÇÃO SUMMARY OF MODIFICATIONS	EXECUTADO EXECUTED	VERIFICADO CHECKED	LIBERADO RELEASED	DATA DATE VER VER
EXEC. /EXECUTED	NSCHMIDT	THREE-PHASE EXPLOSION PROOF MOTOR FRAME L215TC IP55 TEFC	10005474706		000 03	
VERIF. /CHECKED						
LIBER. /RELEASED	DANIELAW					
DATA LB /REL DT	18.01.2018	WMO	Jaraguá do Sul	Product Engineering	FOLHA/SHEET	1 / 1

10 HP 04 Poles 60Hz 414924098/1

UNCONTROLLED COPY RELEASED ZME A3



WEG **NEMA Premium**

W21X

MODEL 01018XT3E215TC

Inverter Duty Motor

Severe Duty

Explosion Proof Motor



Class I, Div 1, Gr C and D - T3C
Class II, Div 1, Gr E and F - T3C
Class II, Div 1, Gr F and G - T3C



Class I, Div 1, Gr C and D - T3C

60Hz: For use on PWM: VT1000:1, CT20:1, 1.00SF, T3C, AMB 40°C
CC029A

PH3 60Hz Fr. L215TC 1000m.a.s.l. IP55 TEFC 237lb

V 230/460

A 25.4/12.7

HP 10

kW 7.5

SF 1.15

SFA 29.2/14.6

RPM 1765

PF 0.81

AMB 40°C

INS cl. F DT80K

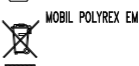
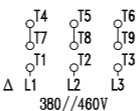
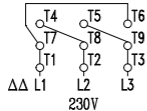
NEMA NOM EFF 91.7%

DUTY CONT.

DES B Code H

AMB 55°C SF1.0

10HP 7.5kW 50Hz 380V 15.3A 1450RPM SF 1.00 EFF 88.5% (IE1)



MADE IN BRAZIL
14284619